



Summer Camps 2024

Summer Camp Registration:

Resident: February 21

Non-Resident: February 28

Town of
Newmarket
camps

Recreation & Culture
newmarket.ca/camps

Mayor & Council



Members of Council at Mulock Harvest Picnic in 2019

Message from the Mayor

As we all prepare to trade in our snow boots for sandals, it is finally time for Newmarket's Summer Camp Guide.

Newmarket's summer camps offer activities for all children, no matter their interest. From cooking to superheroes and sports to musical theatre, there's no shortage of camps to engage children during their summer holidays.

Our camps offer children the opportunity to expand their creative skills and grow in a safe environment. They're great places to stay active, create friendships, and make memories that will last a lifetime.

Take a look at the summer camps we offer and be sure to save the date for registration – Wednesday, February 21 at 6:30 a.m.

Newmarket has so much to experience and explore, and as our town continues to grow, so do the programs and camps we offer.

I look forward to seeing you all this summer!

John Taylor
Mayor



Important Dates

Registration Dates

Resident Registration

Wednesday, February 21 at 6:30 a.m.

Non-Resident Registration

Wednesday, February 28 at 6:30 a.m.



How to Register

Online

Online - It's easy, secure and the fastest way to register for a program!

What you need:

- Xplor Account login
- Visa/Mastercard/AMEX or credit on your account
- Program ID
- **The following information to complete the Camper Information Questionnaire:**
 - Emergency Contact Name & Phone #
 - Camper Details (disability(ies) and/or accommodation(s), medical conditions, dietary restrictions or allergies)

What to do:

- Log on to newmarket.perfectmind.com
- Select the Activity Tab then Registration
- Use the filters and activity categories to find activity
- Select Register or 'Waitlist' depending on availability
- Fill in the Camper Information Questionnaire - this only needs to be completed once throughout the registration process!
- Enter your credit card information or apply your credit
- Print your registration confirmation and receipt at time of registration
- If you experience trouble, call the Help Line at 905-953-5154
- View all of your activities under the schedule section of your online account



Important Information

Log in to your Xplor Account.

newmarket.perfectmind.com

Review 'steps to register' prior to registration.

Forgot your password? Click "Forgot Password" to reset.

Due to volume of users on registration dates, delays in accessing online registration may occur.

In-person

What you need:

- Your Xplor Account Information
- Cash/Cheque/Debit/Visa/Mastercard/AMEX or credit on account
- Program ID or name of program
- **The following information to complete the Camper Information Questionnaire:**
 - Emergency Contact Name & Phone #
 - Camper Details (disability(ies) and/or accommodation(s), medical conditions, dietary restrictions or allergies)

What to do:

- Visit one of our Customer Service Kiosks* during business hours.
This registration method reduces your chances of getting into the programs of your choice as programs fill up quickly.

*Customer Service Kiosks: Ray Twinney Recreation Complex, Municipal Offices, Magna Centre, Newmarket Seniors' Meeting Place, Recreation Youth Centre & telMAX Indoor Skate Park.

16 Things You Should Know Before Starting Summer Camp

GENERAL CAMP INFORMATION

How to Reach Us:

Camp Central: 905-953-5300, ext. 2825 and 2826, or camps@newmarket.ca.

Camp Hours:

9 a.m. to 4 p.m., with Extended Care at select locations from 7:30 to 9 a.m., and 4 to 5:30 p.m.

Registration Ends 11:59 p.m. on the Thursday prior to the camp start date.

CAMP PAPERWORK

To help serve you more efficiently and save time, you will be prompted to fill in a Camper Information Questionnaire when registering for camp. You will only need to complete this questionnaire once during the registration process and for the entire summer!

CAMPER WELCOME EMAIL

You will receive a Welcome Email the Friday prior to the start of camp, with the following forms:

- Weekly Forecasts – an outline of the weekly events
- Consent for Administration of Medication by Auto-Injector
- Consent for Self-Administration and Dispensing of Medication
- Consent for Administration of Medication During Seizure
- Safe Dismissal Consent Form - this short form will need to be completed on a weekly basis

To verify that your email is correct in our system, please contact our Customer Service department at **905-953-5303** or check your **Xplor** account online.

DYNAMIC CAMP STAFF

The Town of Newmarket camp staff are chosen for their passion for working with children, creativity and leadership skills. All camp staff are certified in Standard First Aid, CPR "C" and HIGH FIVE® Principles of Healthy Child Development, Safeguard, and have received a positive Police Vulnerable Sector Check.

LATE FEE POLICY

A \$2 late fee will apply for every five minutes that your child has not been signed out once camp has ended. All camps end at 4 p.m., or 5:30 p.m. for Extended Care registrants. Late fee payments are accepted online through your Xplor account, or at your nearest Customer Service Desk.

SIGN IN/OUT PROCEDURES

We require all parents/guardians to sign their child in and out of camp daily. **Parents/guardians should be prepared to show photo ID daily.** You may choose to give your child permission to arrive and leave camp on their own on their Camper Information Questionnaire. The Town of Newmarket would prefer that children aged nine and under be signed in and out by a parent/guardian.

If your child has an appointment during camp hours, we request that you speak to the Camp Director and make them aware of the date and time. Many camps go swimming and may not be on the camp site at various times throughout the week.

If you require someone other than those listed on the Safe Dismissal Consent Form to pick up your child, you **MUST** re-submit a Safe Dismissal Consent Form to the Camp Director. **We will require the pick-up person to provide photo ID.**

ABSENT OR LATE? HERE'S WHAT TO DO

If your child will be absent from a day of camp please call the Camp Central Line at **905-953-5300, ext. 2825 or 2826**. If your call goes to voicemail, please leave your name, phone number, the camp your child will be absent from, and their full name. We will be sure to get the information to the proper camp.

MEDICAL INFORMATION

If a participant is required to take medication, has a health condition or carries an Epi-Pen, please ensure the appropriate forms are completed prior to your child attending their first day of camp.

CHILD CARE AND EARLY YEARS ACT

Due to the Child Care and Early Years Act, all campers must turn four years old before they are permitted to attend any Town of Newmarket summer camp. For further information please visit ontario.ca

PHOTO POLICY

Photos and videos are not permitted during camp programs, other than specific cases where it has been identified (i.e. Theatre Camp Shows, Move It!, etc.). Photos and videos may be taken by the Town for promotional purposes. In this case, all parents/guardians will be notified and required to give permission if they would like their child to be featured on their Camper Information Questionnaire.

CHILDREN'S WELL BEING IS OUR FIRST PRIORITY

Parents/guardians should be aware that the Family and Child Services Act requires any suspicion or allegation of child abuse to be reported immediately to the Children's Aid Society. The Act recognizes that each of us have a responsibility to the welfare of children. It clearly states any member of the public, including professionals who work with children, have the obligation to promptly report to the Children's Aid Society.

PARENT/ GUARDIAN RESPONSIBILITIES

All parents/guardians are responsible for:

- Discussing camp appropriate behaviours with their children. The Town of Newmarket follows the same code of conduct as the school systems.
- Ensuring your child is appropriately dressed. All participants must wear weather appropriate clothing and closed toe shoes.
- Ensuring that your child brings sunscreen, a hat and bug repellent daily, as camps will spend time outdoors.
- Ensuring that your child brings nutritious nut-free snacks, lunch and lots of water. A refillable water container is recommended.
- Labelling your child's belongings with their full name.
- Ensuring your child does not bring valuable items to camp. The Town of Newmarket and its vendors are not responsible for lost or stolen items. Electronic games, iPods, cellphones, money, etc. are not permitted at camp.
- Guaranteeing your child is toilet trained. All campers must be toilet trained and independent in the washroom. If an accident occurs, a phone call to the emergency contact will be made and the guardian is expected to come in to assist in changing. If your child has specific needs, you may speak with the Inclusion Camp Coordinator at **905-953-5300 ext. 2825** (May-August) if you have a concern.

CAMPER BEHAVIOUR

The Town of Newmarket strives to provide the highest level of safety and enjoyment to all participants and staff during its camps and programs. Coarse language, bullying, eloping and aggressive or inappropriate behaviours are **not** permitted at camp.

These behaviours will be documented, reported, and could result in the removal of a participant from camp. If your child has behavioural concerns please speak to our Recreation Programmer - Inclusion & Support Services at **905-953-5300 ext. 2821** or our Inclusion Camp Coordinator at **ext. 2825** and notify them of triggers and methods that are helpful for your child. It is our goal to make camp enjoyable for everyone!

VOLUNTEERS

The Town of Newmarket has a volunteer program for youth looking to gain experience working with children and developing their leadership skills. If interested in our Summer Camp Volunteer Program, please see **page 36** or visit **newmarket.ca/camps** for more information!

BE NUT AWARE

Participants are not permitted to bring food products that may contain nuts or traces of nuts (peanuts included) to a Town program or camp. Should items that contain nuts be found, the product will be removed from the camp area and returned to the parent/guardian at the end of the day. Soy butter also known as "Wow Butter" is not permitted. Although the product is peanut-free, it creates a stressor in the camp environment for campers with an allergy as it looks and smells just like peanut butter.

RATIOS

The Town of Newmarket strives to adhere to the following staff to participant ratios to ensure safe and successful delivery of programs:

Camp Ratios	5 years and under	1 counsellor: 7 campers
	6 to 9 years	1 counsellor: 8 campers
	9 to 12 years	1 counsellor: 9 campers
	12+ years	1 counsellor: 10 campers

Swim Ratios	6 to 9 Years	1 counsellor: 4 campers
	10+ Years	1 counsellor: 10 campers

Please note: Some vendor companies operate at a 1 counsellor: 10 campers ratio for those 6+ years depending on the nature of the camp.



Extended Care



Extended Care is available at an additional cost for campers 4 to 12 years old who need care before and/or after regular camp hours.

Extended Care Locations and Hours

The Town of Newmarket has 4 Extended Care locations. Please check the camp descriptions for the available Extended Care location:

Location	Address	Hours
Ray Twinney Recreation Complex (RTRC)	100 Eagle Street West	7:30 to 9 a.m. & 4 to 5:30 p.m.
Magna Centre (MC)	800 Mulock Drive	7:30 to 9 a.m. & 4 to 5:30 p.m.
Community Centre and Lions Hall (CCLH)	200 Doug Duncan Drive	7:30 to 9 a.m. & 4 to 5:30 p.m.
Stuart Scott Public School (SSPS)	247 Lorne Avenue	7:30 to 9 a.m. & 4 to 5:30 p.m.

Please note: the week of August 26 to 30, Extended Care is only available at the Ray Twinney Recreation Complex. Extended Care location depends on the camp.

Extended Care Fees

Five day morning care: \$26.50 | Five day evening care: \$26.50

Four day morning care: \$21 | Four day evening care: \$21

Extended Care



How to Register

1. When registering at one of our Customer Service desks, we will be happy to add Extended Care to your camp registration(s).
2. When registering online, please use the course codes below to register for the appropriate Extended Care courses after registering for your camp.
3. Please Note: Campers must be registered in a full day camp in order to access Extended Care. Extended Care is not available for all camp locations. Please see course description for more details

Extended Care AM				
Week	RTRC	MC	CCLH	SSPS
July 2 – 5	25740	26144	26164	
July 8 – 12	25793	26145	26165	26193
July 15 – 19	25811	25145	26167	26196
July 22 – 26	25814	26147	26170	26197
July 29 – August 2	25816	26148	26171	26198
August 6 – 9	25817	26149	26173	26199
August 12 – 16	25818	26150	26175	26200
August 19 – 23	25819	26151	26176	
August 26 – 30	25822			

Extended Care PM				
Week	RTRC	MC	CCLH	SSPS
July 2 – 5	25827	26152	26178	
July 8 – 12	25828	26153	26182	26203
July 15 – 19	25829	26154	26184	26205
July 22 – 26	25830	26155	26186	26206
July 29 – August 2	25832	26157	26187	26209
August 6 – 9	25833	26159	26188	26211
August 12 – 16	25834	26161	26190	26212
August 19 – 23	25835	26163	26192	
August 26 – 30	25836			

Camp Locations

Armitage Village Public School

125 Savage Road | AVPS

Denne Public School

330 Burford Street | DPS

Magna Centre

800 Mulock Drive | MC

Maple Leaf Public School

155 Longford Drive | MLPS

Newmarket Community Centre & Lions Hall

200 Doug Duncan Drive | CCLH

Newmarket Soccer Club

621 Newpark Blvd | NSC

NewRoads Performing Arts Centre

505 Pickering Crescent, | NRPAC

Old Town Hall

460 Botsford St | OTH

Ray Twinney Recreation Complex

100 Eagle Street West | RTRC

Recreation Youth Centre & telMAX Indoor Skate Park

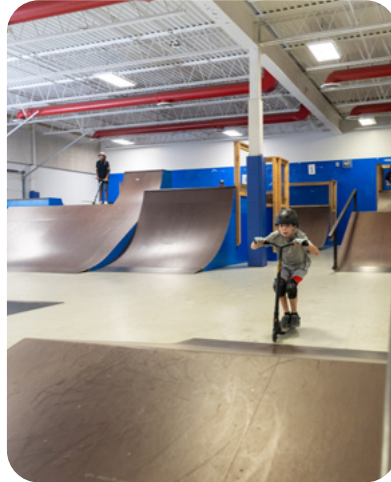
56 Charles Street | RYC

Stuart Scott Public School

247 Lorne Ave | SSPS

Trinity United Church

461 Park Avenue | TUC



Kids on the Move



Enjoy an afternoon of Camp **FREE!**

Daily Camp Drop-In

Maple Leaf Public School
(155 Longford Drive)

Ages: 4 to 12
1 to 4 p.m. daily

Dates	
July 8 to 12	July 29 to August 2
July 15 to 19	August 6 to 9
July 22 to 26	August 12 to 16

This daily drop-in program gives children an opportunity to engage and socialize in a safe and friendly atmosphere. Staff will lead small groups through a variety of games, sports, arts and crafts, and outdoor activities which are designed for participants to have fun. Participants should bring a water bottle, hat, sun protection, and close toed shoes. In the case of inclement weather or extreme heat, the program will move indoors to Maple Leaf Public School’s gymnasium.

Pre-registration is not available

Please note: Maximum 25 participants per session. This program will operate on a first-come first-serve basis - only walk-ins permitted. Registration will close at 1:30 p.m.

All participants must fill out our Kids on the Move Participant Information Form. This form only needs to be filled out once for the entire summer! If you are unable to print the form out beforehand, a blank form will be provided to you on-site. Our Kids on the Move Participant Information Form can be found and downloaded here: newmarket.ca/camps

newmarket.ca/camps

Inclusion & Support Services

The Town of Newmarket is dedicated to ensuring all campers have a successful camp experience. There are times when a child requires more support than our program ratios are able to provide. In these cases, we strongly recommend consulting with us about our support options and adapted camps.

How do I know if additional support is required?

Additional support is required if:

- Extra support is required at school
- A disability exists that could affect the safety of the participant or other participants
- Extra support is required at home for basic care
- Participant is associated with a support agency and/or program
- Participant has a safety plan with their educational institution
- There are behaviours to be managed (ie. biting, scratching, pinching, eloping, etc.)

Families are required to complete an All About Me Package, and in some cases provide any existing safety plans to help camp staff with program adaptations and overall success. When considering a recreation experience, please consider the individual's needs, and that the recreation integrated setting may not be suitable for all persons. Health and Safety of participants and staff is paramount, which could result in participants being denied access to the program.

Adapted Camps

The Town of Newmarket is excited to introduce Adapted Camps this summer! Adapted Camps are specifically designed programs for campers with disabilities and special needs. These programs will feature smaller group sizes, smaller staff ratios (1:3 staff to participants), a sensory aware environment, and more targeted and individualized programming activities. Please see the "Adapted" section of this guide for more information on our adapted child and youth camps!



NEW Adapted Camps! Visit the "Adapted Camps" Section on page 37 for more information!

Inclusion & Support Services

Inclusion 1:1 Support

The Town of Newmarket provides Inclusion 1:1 Support to campers with disabilities and unique needs at no additional cost to families (camp fees still apply) in order for them to be integrated and successfully participating in camps. Support is not guaranteed and is offered on a first-come first-serve basis. Families are required to register into the corresponding "Inclusion 1:1 Support Request" Code to request a 1:1 Support Staff (see below for weekly codes). Prior to the camp season, the Recreation Programmer will contact families directly to confirm their staff support.

Please Note: There may be cases when we may ask an individual be paired with a support person if we deem necessary based on safety concerns for the individual, camp group, and/or Town of Newmarket Staff.

Inclusion 1:1 Support Request

Inclusion 1:1 Support is a service (not a camp) that is offered to campers with disabilities and unique needs in order to participate fully and successfully in camps. By registering in this service, you are requesting a Town of Newmarket Inclusion Facilitator to work 1:1 with your camper with a disability. Please register into the weeks of 1:1 support that correspond to the child's registered camp. Please note, this is only a request process. A camper's Inclusion 1:1 Support Staff will be confirmed by the Town of Newmarket Inclusion team.

Ages: 4+

Location: Corresponding Camp Location

Fee: No Charge

Inclusion 1:1 Support Week	Dates	Code
Inclusion 1:1 Support Request – Week 1	July 2 – 5*	27906
Inclusion 1:1 Support Request – Week 2	July 8 - 12	27908
Inclusion 1:1 Support Request – Week 3	July 15 - 19	27909
Inclusion 1:1 Support Request – Week 4	July 22 - 26	27910
Inclusion 1:1 Support Request – Week 5	July 29 – Aug 2	27911
Inclusion 1:1 Support Request – Week 6	Aug 6 – 9*	27912
Inclusion 1:1 Support Request – Week 7	Aug 12 - 16	27913
Inclusion 1:1 Support Request – Week 8	Aug 19 - 23	27914
Inclusion 1:1 Support Request – Week 9	Aug 26 - 30	27915

*4 Day Week

Can I provide my own inclusion support?

Yes, families may provide their own support (family member, friend, trained support worker or social worker). A Vulnerable Sector Screening and a signed release of liability form is required prior to entering the camp space. The support worker is required to participate in all activities as a positive role model for the participants and adhere to Town of Newmarket Policies and Procedures.

If you require further assistance or would like more information on support options, please contact the Recreation Programmer – Inclusion & Support Services at 905-953-5300 ext. 2821 or inclusion@newmarket.ca

Summer Camp Index



General



Specialty



Sports



Leadership



Adapted

General Camps



**Click here to
register online**

Camps Index

ARE YOU TRIPPIN

Take adventure on the road! During this week campers will swim twice, go on two local trips off-site, and enjoy one special guest. Campers will also participate in scavenger hunts, games, squad activities and more!

Ages: 6 to 9 Years

Location: Trinity United Church

Extended Care: CCLH

5 Day – Res: \$230, Non-Res: \$260

4 Day – Res: \$185, Non-Res: \$215

CAMP NEWLAKA

Camp Newlaka is the perfect adventure for those looking to explore and learn about the world of nature. Each day, the campers will explore the Tom Taylor Trail and Fairy Lake while engaging in a variety of games, activities, arts and crafts, which are designed for participants to have fun. Campers will enjoy Community Centre & Lions Hall's splash pad three times each week and special guest once a week!

Ages: 5 to 7 Years

Location: Community Centre and Lions Hall

Extended Care: CCLH

5 Day – Res: \$190, Non-Res: \$220

4 Day – Res: \$153, Non-Res: \$183

ENVI-SCI CAMP

This camp combines the exciting world of the environment with the spectacular world of science. The adventure begins with campers taking part in experiments, activities, games, crafts and songs both indoors and outdoors. Each week campers will enjoy two visits to the Community Centre & Lions Hall splash pad, one camp swim, and a special guest!

Ages: 7 to 10 Years

Location: Community Centre and Lions Hall

Extended Care: CCLH

5 Day – Res: \$190, Non-Res: \$220

4 Day – Res: \$153, Non-Res: \$183

KIDS PLACE CAMP JR

Seeking adventure and fun? Then this camp is for you! Join us for a week filled with games, crafts, songs, team challenges and so much more. This camp swims three times a week and will enjoy a special guest each week.

Ages: 6 to 9 Years

Location: Ray Twinney Recreation Complex

Extended Care: RTRC

5 Day – Res: \$190, Non-Res: \$220

4 Day – Res: \$153, Non-Res: \$183



KIDS PLACE CAMP MINI

Seeking adventure and fun? Then this camp is for you! Staff will lead campers through a variety of games, activities, story time, scavenger hunts, theme days, arts and crafts, and outdoor activities which are designed for participants to have fun. Campers will enjoy three water days and a special guest each week.

Ages: 4 to 5 Years

Location: Ray Twinney Recreation Complex

Extended Care: RTRC

5 Day – Res: \$190, Non-Res: \$220

4 Day – Res: \$153, Non-Res: \$183

LAST BLAST: ART ATTACK

Spend the last week of summer having a BLAST! Campers will enjoy drawing, sketching and painting in this camp. Staff will lead various types of visual arts & crafts while encouraging campers to add their own unique touch. Participants will enjoy a water day three times a week and have a special guest once a week! A 'Juice & Cheesie' Art Show for friends & family will end the week, on Friday at 3 p.m.

Ages: 6 to 10 Years

Location: Ray Twinney Recreation Complex

Extended Care: RTRC

5 Day – Res: \$205, Non-Res: \$235

LAST BLAST:

KIDS PLACE MINI, JR & SR

Spend the last week of summer having a BLAST! Campers will do a little bit of everything, including, sports, games, team challenges, crafts, songs and so much more. Campers will enjoy three water days and a special guest Don't miss out on our final week of adventure!

Ages: 4 to 5 Years (Mini), 6 to 9 Years (Jr), 9 to 12 Years (Sr)

Location: Ray Twinney Recreation Complex

Extended Care: RTRC

5 Day – Res: \$190, Non-Res: \$220

MINI ADVENTURES: EVERY CHILD IS A SUPERHERO

Calling all superheroes! We can't wait to see your inner superhero and what superpowers you have! Campers will be encouraged to be the best they can be through imaginative play, games, crafts and much more. Campers will also enjoy three water days and a special guest each week!

Ages: 4 to 6 Years

Location: Denne Public School

Extended Care: Not Available

5 Day – Res: \$190, Non-Res: \$220

Camps Index

MINI ADVENTURES: LITTLE BUILDERS

Put on your construction hats and get ready to build! Through teamwork and creativity, campers will have the chance to bring their imagination to life. Each week will be filled with STEM activities, games, songs, three water days, and a special guest. We can't wait to see what you create!

Ages: 4 - 6 Years

Location: Denne Public School

Extended Care: Not Available

4 Day – Res: \$153, Non-Res: \$183

MINI ADVENTURES: MAGIC IN ME

The magic of classic fairy tales collides with modern-day in this camp dedicated to the prince and princess craze! Each day brings a different theme and will be filled with games, songs, crafts, adventures and plenty of imaginative play. Campers will enjoy three water days and a special guest each week. We can't wait to see which prince or princess you dress up as on dress up day!

Ages: 4 to 6 Years

Location: Denne Public School

Extended Care: Not Available

5 Day – Res: \$190, Non-Res: \$220

MINI ADVENTURES: OUT OF THIS WORLD

Calling all astronauts! Get ready to be launched into a galaxy of space-themed activities. Campers will enjoy an active week of adventure, games, and crafts, as well as three water days and a special guest.

Ages: 4 to 6 Years

Location: Denne Public School

Extended Care: Not Available

5 Day – Res: \$190, Non-Res: \$220



**Click here to
register online**

Camps Index





MINI ADVENTURES: SAFARI

Safari Camp is the perfect adventure for young animal lovers. Each day will be filled with exploring the outdoors, scavenger hunts, learning about different animals, as well as animal-themed games and crafts. Campers will enjoy three water days and a special guest where they will interact with real animals!

Ages: 4 to 6 Years

Location: Denne Public School

Extended Care: Not Available

5 Day – Res: \$190, Non-Res: \$220

MINI ADVENTURES: SPY CAMP

Get your magnifying glasses ready for this one! These campers will take part in adventures just like a spy kid would. Campers will enjoy acting like spies and solving their own mysteries, as well as three water days and a special guest each week!

Ages: 4 to 6 Years

Location: Denne Public School

Extended Care: Not Available

5 Day – Res: \$190, Non-Res: \$220

OUTTA TOWNERZ

Get ready to explore further than ever before! During this week, campers will enjoy two local trips off-site and three full-day trips to various locations throughout the GTA! Campers will also go swimming two times a week. Weeks A will feature trips to the Ontario Science Centre, Ripley's Aquarium and the Royal Ontario Museum. Weeks B will feature a trip to the Toronto Zoo, Lego Land and the Art Gallery of Ontario. Admission fees are included.

Ages: 9 to 12 Years

Location: Trinity United Church

Extended Care: CCLH

5 Day – Res: \$395, Non-Res: \$425

4 Day – Res: \$317, Non-Res: \$347

SUMMER SIZZLERS

Come see what's sizzlin' with us this summer! This general half day camp will be filled with games, crafts, songs, team challenges, and so much more. Activities will be centered around a different theme each week, and campers will participate in water activities each day!

Ages: 4 to 8 Years

Location: Maple Leaf Public School

Extended Care: Not Available

5 Day – Res: \$115, Non-Res: \$145

4 Day – Res: \$93, Non-Res: \$123



**Click here to
register online**

Camps Index

Specialty Camps



ADVENTURES IN INTERACTIVE PROGRAMMING

Delivered in partnership with Kids Great Minds
Get creative in a maker environment that blends arts, electronics and code! Experience the Makey Makey board; exploring beginner technological literacy, interactive games, musical instruments and amazing game controllers. Campers will code, draw, build, and colour, helping programming to be contextual and fun. Makey Makey: goo.gl/ceP0wT.

Ages: 8 to 11 Years

Location: Stuart Scott Public School

Extended Care: SSPS

4 Day – Res: \$328, Non-Res: \$458

ART ATTACK CAMP

Campers will enjoy drawing, sketching and painting in this camp. Staff will lead various types of visual arts & crafts while encouraging campers to add their own unique touch. Participants will swim three times a week and have a special guest once a week! A 'Juice & Cheesie' Art Show for friends & family will end the week, on Friday at 3 p.m.

Ages: 6 to 10 Years

Location: Ray Twinney Recreation Complex

Extended Care: RTRC

5 Day – Res: \$205, Non-Res: \$235

4 Day – Res: \$165, Non-Res: \$195

[Camps Index](#)



ART STUDIO CAMP

A mature and creative learning environment for pre-teens. Campers will be exposed to a variety of art mediums throughout the week such as watercolours, acrylics, sculpture, paper mâché, mosaics, cartooning, sketching, and pen and ink. Participants will swim and enjoy a special guest once a week! An Art Show for friends & family will end the week, on Friday at 3 p.m.

Ages: 9 to 13 Years

Location: Old Town Hall

Extended Care: CCLH

5 Day – Res: \$230, Non-Res: \$260

4 Day – Res: \$185, Non-Res: \$215

BATTLE ROBOTS

Delivered in partnership with Robothink
Gear up for epic battles as you design and code powerful robots to compete in thrilling combat challenges! Enter the arena of fierce robotic battles, customizing combat bots and strategizing to outmaneuver and defeat opponents in thrilling showdowns.

Ages: 6 to 12 Years

Location: Denne Public School

Extended Care: Not Available

4 Day – Res: \$289, Non-Res: \$319



**Click here to
register online**

BLOCKBUSTER MOVIE MAKING CAMP

*Delivered in partnership with
Film Camp in a Box*

Fill your week with action, adventure, and a lot of comedy with Film Camp in A Box movie making camp. Mentored by master filmmakers, campers will engage in hands-on exploration of the filmmaking process, including pre production, production and post production. Working in small crews, they will learn about cinematography, script writing and editing. Campers will then create, act in and edit their own short film and movie trailer. Participants will have the opportunity to use the latest technology, including Mac books, 4K cameras, tripods, boom microphones, green screens and the use of an aerial drone. Movies will be presented at our red carpet, popcorn film festival and archived on our digital theatre.

Ages: 9 to 13 Years

Location: Stuart Scott Public School

Extended Care: SSPS

5 Day – Res: \$362, Non-Res: \$392

CARTOON COMPUTER ANIMATIONS CAMP

*Delivered in partnership with
Kids Great Minds*

Come unleash your imagination in this camp by creating your own animated cartoon movie. You will be guided step by step in a collaborative, computerized environment, as you create and watch your cartoon come to life. The software's engaging design and multiple levels, offer a fun, rewarding experience providing the novice animator the courage to create with confidence! At the end of the camp, parents will be sent their animated movies.

Ages: 6 to 11 Years

Location: Stuart Scott Public School

Extended Care: SSPS

5 Day – Res: \$384.50, Non-Res: \$414.50

[Camps Index](#)



**Click here to
register online**



**Click here to
register online**

COOKING CAMP JR & SR

Come see what's cookin' with us! Campers will learn the fundamentals behind healthy eating and basic cooking techniques by cooking their lunch and 2 snacks each day. Games, crafts, and squad challenges are also all part of the fun at this camp. Campers are encouraged to bring snacks to supplement the food they will be cooking throughout the day.

Ages: 6 to 9 Years (Jr), 9 to 12 Years (Sr)

Location: Recreation Youth Centre & telMAX Indoor Skate Park

Extended Care: Not Available

5 Day – Res: \$230, Non-Res: \$260

4 Day – Res: \$185, Non-Res: \$215

Camps Index

CREATING VIRTUAL REALITY AVATARS

*Delivered in partnership with
Kids Great Minds*

This camp is for every child interested in 3D Character Design and Virtual Reality (VR)! Campers will learn how to create industry level, high resolution and textured 3D characters from their favourite movies and videogames. These characters will later be added to their own personalized environments that can be used in animations, video games and seen with VR devices. KGM will bring in the VR goggles so campers can enjoy their amazing work!

Ages: 7 to 11 Years

Location: Stuart Scott Public School

Extended Care: SSPS

5 Day – Res: \$384.50, Non-Res: \$414.50



CREATIVE CAMPERS

Let's get creative! At this specialty camp, campers will use a number of avenues to express themselves. Through visual arts, music, drama and movement, campers can showcase their best selves! Campers will also participate in traditional camp activities such as games, songs, and sports, along with two water days each week. Participants will perform a show for friends and family on Friday at 3pm!

Ages: 4 to 6 Years

Location: Maple Leaf Public School

Extended Care: Not Available

5 Day – Res: \$200, Non-Res: \$230

4 Day – Res: \$161, Non-Res: \$191

EUREKA! JR & SR

Delivered in partnership with Mad Science

Children will overcome a series of challenges using basic materials, simple machines, tips from famous inventors and the most important of all – their mind. With a little bit of ingenuity children will create catapults and forts, construct working light sticks to take home and assemble a set of circuits with batteries and light bulbs. While Thomas Edison said "invention is 10% inspiration and 90% perspiration", this camp is 100% FUN! Daily Topics Include: Rock-Paper- Scissors, Whiz Kids, Shipwrecked, Think Fast, Science Fiction.

Ages: 4 to 6 Years (Jr), 6 to 12 Years (Sr)

Location: Armitage Village Public School

Extended Care: Not Available

5 Day – Res: \$350, Non-Res: \$380

FILM CAMP IN A BOX: MUSIC VIDEO PRODUCTION WORKSHOP

Delivered in partnership with Film Camp in a Box

Rock and Roll all night and every day in our Music Video Production workshop. Mentored by master filmmakers, campers will engage in hands-on exploration of the music video production process, including pre production, production and post production. Working collaboratively in small crews, they will learn about cinematography specific to music videos and advanced editing techniques. Using an existing pop culture song, campers will listen to the lyrics, learn them and create their own story and meaning. They will then act in and edit their full music video. Movies will be presented at our red carpet, popcorn film festival and archived on our digital theatre.

Ages: 9 to 13 Years

Location: Stuart Scott Public School

Extended Care: SSPS

5 Day – Res: \$362, Non-Res: \$392



**Click here to
register online**

Camps Index



GLEE CAMP JR & SR

Do you enjoy singing in a group to all different types of music? If so, Glee Camp is where you belong! Throughout the week campers will be exposed to different musical genres, introduced to harmonies, melodies, music history, and create movements to go along with their musical pieces. Campers will enjoy one recreational swim a week. To end the week, participants will perform a show for friends and family at 3pm!

Ages: 6 to 9 Years (Jr), 9 to 12 Years (Sr)

Location: NewRoads Performing Arts Centre

Extended Care: Not Available

5 Day – Res: \$190, Non-Res: \$220

4 Day – Res: \$153, Non-Res: \$183

HOW AMUSING WEEK

Delivered in partnership with Engineering for Kids

Ah, the thrill of an amusement park...zipping around on race cars, zooming through the loops of a rollercoaster, trying your luck at a floating boat game, hokey playing with Robots and more...Can't get better than that! During this camp, campers will divide into theme park teams. They will be challenged in specific engineering-related contests with the goal of creating the most fantastic and thrilling theme park experience.

Ages: 7 to 12 Years

Location: Denne Public School

Extended Care: Not Available

5 Day – Res: \$355, Non-Res: \$385



**Click here to
register online**

HYDROCRAFT RACING VIDEO GAME & MARINE ENGINEERING CAMP

Delivered in partnership with Engineering for Kids

Prepare for some fast-splashing fun as we use the Engineering Design Process to design and create our very own racing game to race our personally designed hydrocrafts! In this camp, campers design, create, test, and refine several types of marine-based devices and vehicles & Robots! Activities: Hands-on Marine Engineering, Robotics & Video Game Design.

Ages: 7 to 12 Years

Location: Denne Public School

Extended Care: Not Available

5 Day – Res: \$355, Non-Res: \$385

IMAGINE X! JR

Delivered in partnership with X-Movement

X Movement is excited to inspire magic with our most fun camp yet - 'IMAGINE X'! Using the power of play, campers dive into exciting and engaging movement activities like dance-battles, sports, & fitness challenges. Ignite creativity and boundless imagination with mindfulness exercises, drama, and arts & crafts. Each day will include a fun play-based game designed to foster long-lasting friendships and unleash imagination, all while having an absolute blast!

Ages: 6 to 9 Years

Location: Armitage Village Public School

Extended Care: Not Available

5 Day – Res: \$330, Non-Res: \$360

Camps Index



**Click here to
register online**



JUNIOR INVENTORS CAMP

Delivered in partnership with Engineering for Kids

We have opened the workshop for a week full of fun, creativity, and of course — engineering! Campers will invent new machines and explore creative design solutions using the Engineering Design Process. Activities: Robotics & Coding, plus hands-on Mechanical & Civil Engineering.

Ages: 4 to 6 Years

Location: Denne Public School

Extended Care: Not Available

5 Day – Res: \$355, Non-Res: \$385

JUNIOR MISSION TO MARS

Delivered in partnership with Engineering for Kids

Our Junior Engineers will be inspired by Mars-themed children's literature featured in this week of camp. The stories will deepen their knowledge and spark their imaginations as they engage in hands-on engineering challenges using EFK's Engineering Design Process. In the stories and challenges, students will explore various topics in science, as well as Mars Rovers, aerospace, geologic, and environmental engineering. This camp is sure to spark children's imagination and ignite their curiosity about the future of Mars exploration.

Ages: 4 to 6 Years

Location: Denne Public School

Extended Care: Not Available

5 Day – Res: \$355, Non-Res: \$385

JUNIOR SCIENCE ACADEMY

Delivered in partnership with Mad Science

During this exciting day of fun, hands-on and interactive programming, our professionally trained Mad Scientists will take your kindergarten camper on a thrilling journey of amazing scientific discoveries. Through amazing, hands-on experiments and demonstrations the fascinating world of dinosaurs, chemical reactions & bubbling potions, erupting volcanoes, ooey gooey slime, space and much, much more will be explored. Each day children will make cool take-home activities which they will be excited to bring home to show off. Daily Topics Include: My Senses, Our World, Bugs, Engineers, Jr. Scientists.

Ages: 4 to 6 Years

Location: Armitage Village Public School

Extended Care: Not Available

5 Day – Res: \$350, Non-Res: \$380

JUNIOR TRAVEL CAMP

Delivered in partnership with Engineering for Kids

150 years ago, airplanes had not even made their first flight. Yet, today, we can fly to the other side of the world in 12 hours! It is thanks to advances in technology that we can explore so much of the world. In this camp, teams will have to work together to see who is able to travel the farthest around the world. This trek will require students to design their very own boat, plane, robots and even a rocket!

Ages: 4 to 6 Years

Location: Denne Public School

Extended Care: Not Available

5 Day – Res: \$355, Non-Res: \$385

Camps Index



LEGO & CLAY STOP MOTION ANIMATION

Delivered in partnership with Film Camp in a Box

Fill your week with action, adventure and a lot of comedy with Film Camp in A Box Lego and claymation camp. Mentored by master filmmakers, campers will engage in hands-on exploration of the stop motion animation process, including pre production, production and post production. Working in small crews, they will learn about stop motion animation, set design, script writing and editing. Campers will then create their own stop motion animation and edit a short film and movie trailer. Movies will be presented at our red carpet, popcorn film festival and archived on our digital theatre.

Ages: 7 to 9 Years

Location: Stuart Scott Public School

Extended Care: SSPS

5 Day – Res: \$362, Non-Res: \$392

4 Day – Res: \$295, Non-Res: \$325

LET'S MAKE TOYS

Delivered in partnership with Engineering for Kids

It is fun for a kid to play with a toy. Imagine how amazing it can be to play with a self-made toy. In this full-week camp, the youngest engineers will be introduced to the fundamental concepts of energy, materials, and movement. campers will explore and make different mechanical toys. They will also build and program robotics toys including, RACING CAR, and MARS ROVER. Activities: Robotics & Coding, Plus Mechanical & Aerospace Engineering.

Ages: 4 to 6 Years

Location: Denne Public School

Extended Care: Not Available

5 Day – Res: \$355, Non-Res: \$385

MACHINE MANIACS JR & SR

Delivered in partnership with Mad Science

Join us for a week full of creations, chemistry and cameras! Work together with your fellow engineers to build the best bridge in our shake, rattle and roll challenge. Turn your daily newspaper into a four-foot-high Geodesic Dome that you can sit in with your friends. Explore the world of birds and beasts with bird house building and our super bug investigation. Mix, mash and brew concoctions to create cool sidewalk chalk and bath fizzers during a day in the chemistry lab. Discover the wonders of photography as you study cameras, light and colours. Daily Topics Include: Jr. Engineers, Birds & Beasts, Machine Mania, Shutterbugs, Crazy Chemistry.

Ages: 4 to 6 Years (Jr), 6 to 12 Years (Sr)

Location: Armitage Village Public School

Extended Care: Not Available

5 Day – Res: \$350, Non-Res: \$380

4 Day – Res: \$290, Non-Res: \$320



**Click here to
register online**

Camps Index



MOVE IT! MINI, JR & SR

This camp is for all you movers and shakers out there. Throughout the week, campers will be introduced to different types of dance and work towards a final showcase for friends and family each Friday at 3 p.m.! Mini campers will enjoy two water days each week. Jr. & Sr. campers will enjoy a recreational swim each week.

Ages: 4 to 5 Years (Mini), 6 to 9 Years (Jr), 9 to 12 Years (Sr)

Location: Old Town Hall

Extended Care: CCLH

5 Day – Res: \$190, Non-Res: \$220

4 Day – Res: \$153, Non-Res: \$183

MINECRAFT® MISSION TO MARS & MARS ROVER CAMP

Delivered in partnership with Engineering for Kids

Students will learn about the engineering, technology, and innovation that is required for future human habitation of Mars. Within Minecraft®, students will complete a variety of missions that are necessary for survival and the advancement of science on the Red Planet. Students will apply their creativity, collaboration, and problem-solving skills while completing missions within EFK's unique, customized, collaborative Mission to Mars Minecraft® Map. This is a one-of-a-kind, out-of-this-world experience you will not find anywhere else. Activities: Minecraft®, Robotics, Coding, Hands- On Aerospace.

Ages: 7 to 12 Years

Location: Denne Public School

Extended Care: Not Available

5 Day – Res: \$367, Non-Res: \$397

MINECRAFT® URBAN INNOVATIONS

Delivered in partnership with Engineering for Kids

Design, create, and make your very own city come alive using Minecraft®! In this camp, kids will explore a variety of themes centered around scientific, sustainable, innovative, and futuristic city planning and design. Kids will immerse themselves in Minecraft® while applying the Engineering for Kids design process to create a model of their very own, futuristic, sustainable city. Activities: Minecraft®, Civil & Electrical Engineering.

Ages: 7 to 12 Years

Location: Denne Public School

Extended Care: Not Available

5 Day – Res: \$367, Non-Res: \$397

PC AND VIDEO GAME CREATION CAMP

Delivered in partnership with Kids Great Minds

Campers will learn a visual programming language that allows them to create and play their own video games on a PC. Using a simple language and entirely icon-based interface, campers will learn advanced game design concepts in a simple, direct, and intuitive manner. This intelligent screen time is an excellent opportunity to introduce kids to computer programming. Gaming controllers will be on-site to simulate the console experience.

Ages: 7 to 10 Years

Location: Stuart Scott Public School

Extended Care: SSPS

5 Day – Res: \$384.50, Non-Res: \$414.50

[Camps Index](#)



Click here to register online



PLAYFUL PLAYGROUND CAMP

Delivered in partnership with Engineering for Kids

In this camp, students will become mechanical engineers that have been hired to design the ultimate playground in their community. Playgrounds are packed full of simple machines such as levers, wheels and axles, inclined planes, and pulleys. In these lessons, students will learn about the simple machines they encounter every day at the playground while advancing their literacy skills through a variety of read aloud. They will tackle fun and engaging challenges while using the EFK Engineering Design Process. We can't wait to play! Activities: Robotics & Coding, plus hands-on Mechanical.

Ages: 4 to 6 Years

Location: Denne Public School

Extended Care: Not Available

5 Day – Res: \$355, Non-Res: \$385

REDSTONE INVENTIONS IN MINECRAFT® CAMP

Delivered in partnership with Kids Great Minds

Campers will enjoy the week building and playing in Minecraft® while learning basic circuitry principles. Campers will use a team approach to discover the underlying mechanics of the game and learn new logic and problem-solving skills, giving them an opportunity to create bigger and better versions of their inventions in the world of Minecraft®.

Ages: 7 to 12 Years

Location: Stuart Scott Public School

Extended Care: SSPS

5 Day – Res: \$384.50, Non-Res: \$414.50

ROBOGAME CARNIVAL & MASTER MACHINES

Delivered in partnership with Engineering for Kids

Gear up for an exciting week of mechanical engineering! In this camp, students will explore several of the mechanical forces that create movement in various machines. Students will work as mechanical engineers using EFK's Engineering Design Process to create exciting, hands-on projects that spin, cascade, launch, pivot, dig, and race. RoboGames Carnival is a place where robots can have fun, compete, and go on an exciting adventure. Activities; Robotics Competitions, Mechanical Engineering.

Ages: 7 to 12 Years

Location: Denne Public School

Extended Care: Not Available

5 Day – Res: \$355, Non-Res: \$385



Click here to register online

Camps Index

ROCKET CAMP

Delivered in partnership with Mad Science

Yes, we are Rocket Scientists! And you can be too! Blast to the top of the class with an in depth look at all things ROCKET! This action-packed week focuses on the physics of rocket flight, the parts of a rocket and rocket launches. You will experience every aspect of rocket launching as you join a different crew each day. Prepare for launch, send your rockets into the sky and track their altitudes as we launch 10 different rockets each week! You are certain to have a blast exploring, building and launching many varieties of rockets. Daily Topics Include: Rocket Scientists, Rocket Flight, Mission Control, Rocket Propulsion & Recovery, Go for Launch!

Ages: 6 to 12 Years

Location: Armitage Village Public School

Extended Care: Not Available

5 Day – Res: \$350, Non-Res: \$380

SCIENCE ADVENTURES JR & SR

Delivered in partnership with Mad Science

Campers will use forensic science to solve a crime. A visit to Cell City will reveal the inner workings of DNA while a trip down the Organ Trail will provide a Body Portrait. Explore the wonders of gravity, balance and the science behind the illusive sweet spot. Build the strongest helmet for our friend Eggbert in our safe egg challenge. We will discover how to get a rainbow in a test tube and build a Potato Power Plant during a day of radical chemical reactions. Daily Topics Include: Cell City, Organ Trail, The Scene of the Crime, Radical, Reactions, The Science of Sport.

Ages: 4 to 6 Years (Jr), 6 to 12 Years (Sr)

Location: Armitage Village Public School

Extended Care: Not Available

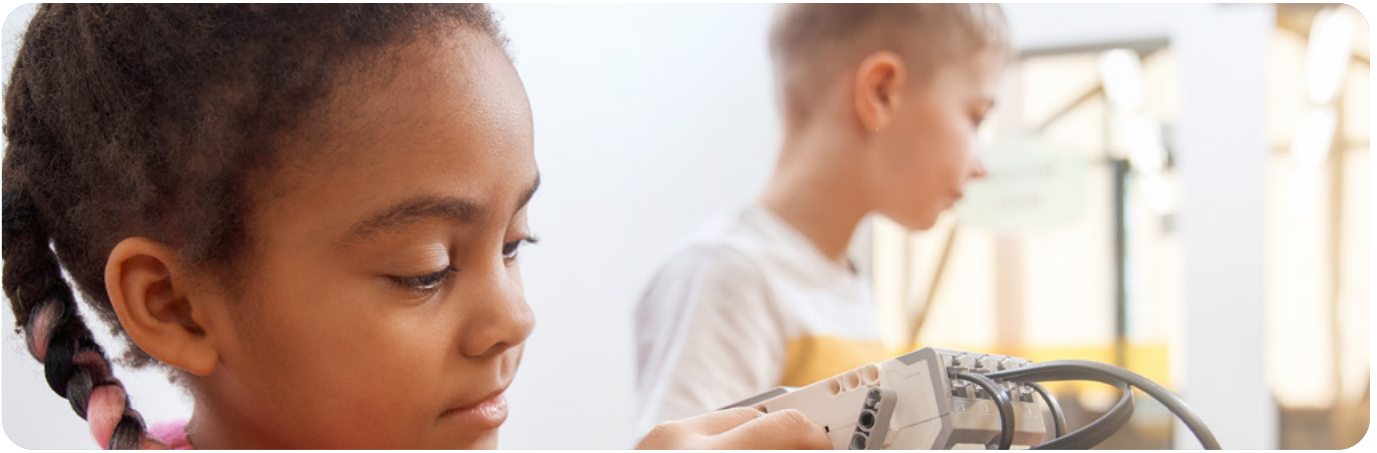
5 Day – Res: \$350, Non-Res: \$380



**Click here to
register online**



Camps Index



THEATRE CAMP JR & SR

Looking to develop your acting skills? This 2-week camp is for you! Campers will strengthen their performance skills through character development and improvisation exercises, drama games, skits and script readings. Campers will also a camp swim on the first week, while learning what it takes to make a production run smoothly. There will be an evening performance on the final Thursday at 6pm, and an afternoon performance on the final Friday at 3pm. Friends and family are encouraged to attend these performances!

Ages: 6 to 9 Years (Jr), 9 to 12 Years (Sr)

Location: NewRoads Performing Art Centre

Extended Care: Not Available

10 Day – Res: \$375, Non-Res: \$405

X-GLOBAL SPORTS JR & SR

Delivered in partnership with X-Movement

X Movement is excited to present X-Global Sports, a summer camp filled with fun, growth, and global exploration! Campers dive into thrilling sports* like Cricket, Aussie Rules Footy, Taekwondo, and Gaelic Games. They will embrace the diverse cultures of Australia, India, Japan and many more countries* from around the globe. Join us for a journey of teamwork, perseverance, growth, and of course FUN!

Ages: 6 to 9 Years (Jr), 10 to 13 Years (Sr)

Location: Armitage Village Public School

Extended Care: Not Available

5 Day – Res: \$330, Non-Res: \$360

3D PRINTING & MODELLING CAMP

Delivered in partnership with Kids Great Minds

Come and 3D print with us!! Campers will fabricate their own 3D objects from start to finish; such as cars, minions, robots, small toys and more. Our 3D printer will be on site so kids can see it in action, learning how it works, while printing their own creations! Each participant will be able to print 1 small 3D piece to take home to show off! Note: Additional pieces can be made available at an additional cost.

Ages: 7 to 12 Years

Location: Stuart Scott Public School

Extended Care: SSPS

5 Day – Res: \$384.50, Non-Res: \$414.50



**Click here to
register online**

Camps Index

Sports Camps

BASKETBALL CAMP

Delivered in partnership with YNBA Basketball
Stay healthy and active this summer with YNBA Basketball. The Town of Newmarket has partnered with the not-for-profit organization, YNBA, to run skills and drills all in a 'fun' filled atmosphere! Take your game to the next level! Campers will participate in outdoor activities daily, unless there is inclement weather.

Ages: 8 to 12 Years

Location: Clearmeadow Public School

Extended Care: Not Available

5 Day – Res: \$290, Non-Res: \$320

4 Day – Res: \$238, Non-Res: \$268

CAMP EXTREME

At this camp, we take adventure and fun to the next level! Swimming and water sports in the Magna pool, skateboarding at the outdoor skate park, climbing through high ropes courses, and more! Participants require their own skateboard or scooter and skateboard helmet for use at the skate park.

Ages: 9 to 12 Years

Location: Magna Centre

Extended Care: MC

5 Day – Res: \$230, Non-Res: \$260

4 Day – Res: \$185, Non-Res: \$215

HOCKEY CAMP JR & SR

Campers will learn on and off ice skills and drills to enhance playing performance. Each day will include ice time, ball hockey, team challenges and camps games. Full equipment required. Participants should be able to skate independently.

Ages: 6 to 9 Years (Jr), 9 to 12 Years (Sr)

Location: Magna Centre

Extended Care: MC

5 Day – Res: \$260, Non-Res: \$290

4 Day – Res: \$209, Non-Res: \$239



**Click here to
register online**

Camps Index



INTRODUCTION TO ULTIMATE FRISBEE

Delivered in partnership with Toronto Rush

Learn from professional players and coaches from the Toronto RUSH of the American Ultimate Disc League! Camp Coaches will also include elite Women's players from the GTA. Campers will learn the rules of Ultimate Frisbee and enjoy scrimmage games 4X4. By the end of the week, participants will have learned gripping the disc, forehand throws, backhand throws, catching the disc, cutting and creating space, small area games and distance throwing.

Ages: 8 to 13 Years

Location: Armitage Village Public School

Extended Care: Not Available

4 Day – Res: \$266, Non-Res: \$296

KARATE CAMP JR & SR

Deliver in partnership with Jitsu-Do Karate

Self-defense, kicks, punches, fitness and fun await at Karate Camp! This camp is hosted by black belt instructors and will give campers a great introduction to karate mixed with camp games, sports, crafts, and fun!

Ages: 5 to 8 Years (Jr), 9 to 12 Years (Sr)

Location: Armitage Village Public School

Extended Care: Not Available

5 Day – Res: \$299, Non-Res: \$329

MINOR LEAGUERS

Minor Leaguers is an active camp where you will learn new sports and team up with new rookies. Campers will play a variety of sports each week, learning a variety of skills, drills and rules. Bring your sportsmanship with you and get ready to cheer each other on! Campers will also participate in camp games, crafts, outdoor play and two water days each week.

Ages: 4 to 5 Years

Location: Magna Centre

Extended Care: MC or Not Available (week dependent)

5 Day – Res: \$190, Non-Res: \$220

4 Day – Res: \$153, Non-Res: \$183

OUTDOOR SPORTS SR

Join us for a week of outdoor sports at the Ray Twinney Recreation Complex! Learn the rules and practice skills for sports such as track, ultimate Frisbee, flag football, soccer, baseball and more. Campers will stay active by participating in variety of skills, drills, camp games & outdoor play. Participants will enjoy a recreational swim three times each week!

Ages: 9 to 12 Years

Location: Ray Twinney Recreation Complex

Extended Care: RTRC

5 Day – Res: \$190, Non-Res: \$220

4 Day – Res: \$153, Non-Res: \$183



**Click here to
register online**

Camps Index



PURSUIT TO PARIS MINI

Come join the Town of Newmarket on our pursuit to the Paris Olympic Games! Campers will participate in opening and closing ceremonies and in many sports that are included in the Summer Olympics such as volleyball, soccer, track and field, and many more! → Campers will enjoy three water days each week!

Ages: 4 to 6 Years

Location: Ray Twinney Recreation Complex

Extended Care: RTRC

5 Day – Res: \$190, Non-Res: \$220

4 Day – Res: \$153, Non-Res: \$183

PURSUIT TO PARIS JR

Come join the Town of Newmarket on our pursuit to the Paris Olympic Games! Campers will participate in opening and closing ceremonies and in many sports that are included in the Summer Olympics such as volleyball, soccer, track and field, and many more! Campers will enjoy three recreational swims each week!

Ages: 6 to 9 Years

Location: Ray Twinney Recreation Complex

Extended Care: RTRC

5 Day – Res: \$190, Non-Res: \$220

4 Day – Res: \$153, Non-Res: \$183



**Click here to
register online**

Camps Index



SKATE & SCOOTER JR & SR

Master the elements of scooters and skateboarding and learn park etiquette. Designed for the beginner to avid skaters, campers will have plenty of skateboard and scooter time to practice. Staff will also lead campers through a variety of games, activities, sports and outings along the Tom Taylor Trail, along with a recreational swim once a week! Participants require their own skateboard or scooter and skateboard helmet. Please note, no official instruction is provided, but staff members are available to support riders and give pointers throughout the day.

Ages: 6 to 9 Years (Jr), 9 to 12 Years (Sr)

Location: Recreation Youth Centre & telMAX Indoor Skate Park

Extended Care: Not Available

5 Day – Res: \$190, Non-Res: \$220

4 Day – Res: \$153, Non-Res: \$183

SOCCER CAMP JUNIOR & INTERMEDIATE

Delivered in partnership with the Newmarket Soccer Club

Play like a champion in the World Cup! The Town of Newmarket has partnered with the Newmarket Soccer Club to run a soccer specific camp based around fun filled skills and activities in the Newmarket Soccer Centre. Campers will develop their training through small-sided games and ball mastery. Come play like Jessie Fleming and Alphonso Davies!

Ages: 6 to 8 Years (Jr), 9 to 12 Years (Int)

Location: Newmarket Soccer Club

Extended Care: Not Available

5 Day – Res: \$335, Non-Res: \$365



SPORTS CAMP JR

GAME ON! At this camp, campers will play a variety of sports each week, learning basic skills and rules. Campers will stay active by participating in variety of skills, drills, camp games & outdoor play. Participants will enjoy a recreational swim three times each week!

Ages: 6 to 9 Years

Location: Magna Centre

Extended Care: MC or Not Available (week dependent)

5 Day – Res: \$190, Non-Res: \$220

4 Day – Res: \$153, Non-Res: \$183

SWIM CAMP JR & SR

For the adventurous fish in your family! Campers will participate in a 45-minute swimming lessons 4 times each week, and a daily recreational swim. In this 2-week camp, campers will have the opportunity to work towards a LSS Swim for Life level during their lesson. Swim groups will be created by grouping together swimmers of similar levels. When campers are not swimming, they will participate in traditional camp activities and group challenges.

Ages: 6 to 9 Years (Jr), 9 to 12 Years (Sr)

Location: Magna Centre or Ray Twinney Recreation Complex (week dependent)

Extended Care: MC or RTRC (week dependent)

10 Day – Res: \$595, Non-Res: \$625

9 Day – Res: \$531, Non-Res: \$561

SWIMCYCLE JR & SR

Get ready for adventure time! Campers will swim, cycle, tread, trail, float, and cruise their way through the summer. Campers will ride around Newmarket's trails and swim every day. Participants should be proficient and independent bike riders. Participants require their own bike, helmet, and lock. Training wheels are not permitted due to safety concerns.

Ages: 6 to 9 Years (Jr), 9 to 12 Years (Sr)

Location: Recreation Youth Centre & telMAX Indoor Skatepark or Stuart Scott Public School (week dependent)

Extended Care: SSPS or Not Available (week dependent)

5 Day – Res: \$200, Non-Res: \$230

4 Day – Res: \$161, Non-Res: \$191

TENNIS CAMP JR & SR

Campers will have the opportunity to play just like the pros! Forehand, backhand, serves and volleys. Camp activities will be played to break up the day, and participants will swim daily. Participants must bring their own tennis racket.

Ages: 6 – 9 Years (Jr), 9 – 12 Years (Sr)

Location: Stuart Scott Public School

Extended Care: SSPS

5 Day – Res: \$200, Non-Res: \$230

4 Day – Res: \$161, Non-Res: \$191

[Camps Index](#)



**Click here to
register online**

Leadership Camps

COUNSELLOR IN TRAINING

Are you interested in preparing to become a successful camp counsellor? In this course you will learn program planning, games and resources, behaviour management strategies and more. Standard First Aid and CPR-C, Safeguard, and HIGH FIVE: Principles of Healthy Child Development certifications included. This course includes a 2 week in class portion, followed by a volunteer placement, for successful candidates, at a Town of Newmarket Summer Camp. Placements will be coordinated on site with the Camp Director. Note: there are no prerequisites for this course.

Ages: 13 to 16 Years

Location: Maple Leaf Public School

Extended Care: Not Available

10 Day – Res: \$455, Non-Res: \$485

9 Day – Res: \$410, Non-Res: \$440

JUNIOR FIREFIGHTER

In partnership with the Central York Fire Services, this one week camp introduces participants to the world of firefighting! Each day will be designated to a different topic of fire safety and prevention, such as basic first aid and fire extinguisher training. It is designed for campers to get hands-on experience on what it is like to be a firefighter, in a safe environment, through a variety of team building exercises, leadership activities, active games, fire escape challenges, and more! Throughout the week, campers will take daily trips to the local fire station and work as a team towards developing a fire safety education presentation for the community.

Ages: 8 to 11 Years

Location: Ray Twinney Recreation Complex

Extended Care: RTRC

5 Day – Res: \$200, Non-Res: \$230



**Click here to
register online**

JUNIOR LIFEGUARD

Learn all about the exciting world of lifeguarding, improve your skills, your strokes, make new friends, get fit, and have fun! This 2-week camp emphasizes improving overall fitness and endurance along with promoting teamwork, leadership, and lifesaving knowledge through fun aquatic lifesaving based activities. Throughout the week, campers will work with their teammates to develop a water safety community education project. Swimmers must be able to swim 25m of the pool and be comfortable in deep water.

Ages: 10 to 12 Years

Location: Magna Centre

Extended Care: MC

9 Day – Res: \$410, Non-Res: \$440

JUNIOR VETERINARIANS

In partnership with the Ontario SPCA and Humane Society, campers will be introduced to the life of a veterinarian! Campers will enjoy special guest visits where they will learn about caring for animals and their well-being, understanding animal's emotions, and meet live animals! Throughout the week, junior veterinarians will work as a team to develop animal advocacy presentations to be shared with and toys that will be donated to the Humane Society at the end of the week. Campers will graduate the course as an Animal Advocate and receive a certification of completion.

Ages: 10 to 12 Years

Location: Community Centre and Lions Hall

Extended Care: CCLH

4 Day – Res: \$153, Non-Res: \$183



**Click here to
register online**

LEADER IN TRAINING

Leader in Training is a one-week course that introduces participants to being a leader in the camp world! Participants will develop their leadership skills through various activities and lessons. Participants will work as a group to put on a Mini-Event for Town of Newmarket Camps to attend. There is no placement.

Ages: 10 to 12 Years

Location: Ray Twinney Recreation Complex

Extended Care: RTRC

5 Day – Res: \$190, Non-Res: \$220

4 Day – Res: \$153, Non-Res: \$183

MEDICS CAMP: DISCOVER

Delivered in partnership with Medics Camp

Medics Camp DISCOVER theme will introduce kids ages 9 – 12 to the world of medical science, health and the human body through engaging hands-on activities. Kids will get to be doctors for a week as they use real medical equipment to take vital signs, hunt for germs, examine x-rays, and observe a cow heart dissection and much more! Each day our STEM certified program focuses on different medical themed based activities and experiments in small groups. Throughout the week, kids will also be introduced to various types of doctors and healthcare professionals. Our Discover theme highlights Family Physicians, Dentists, Orthodontists, Pediatricians, Obstetricians, Cardiologists, Pulmonologists, Respiratory Therapists, Orthopedists, Podiatrists, Radiologists, Virologists and more...through our activities. Friday of Medics Camp always includes first aid related to topics learned earlier in the week. First Aid topics include choking, CPR, wound care, nose bleeds, sprains, strains and fractures.

Ages: 9 to 12 Years

Location: Community Centre and Lions Hall

Extended Care: CCLH

5 Day – Res: \$390, Non-Res: \$420

Camps Index

Summer Camp Volunteer Training

Interested in building your experience for future employment?

Want to make a difference in your community?

Looking to help make summer camp a fun and inclusive place for all?

The Town of Newmarket has a free Summer Camp Volunteer Training for youth looking to gain experience working with children and developing their leadership skills!

- **When:** Thursday, May 30, 2024 from 4 - 7:30 p.m.
- **Where:** Community Centre & Lions Hall
- **How to Register:** Use barcode **29531** to register through your newmarket.perfectmind.com account!

Successful candidates will be contacted regarding their one-week camp placement following the course and can use these hours towards their high school volunteer hours! Successful candidates are those that are actively listening and engaged during the entirety of the course, respectful towards other participants and the instructor, and show an interest in the volunteer position. Please come to class with the Volunteer Application filled out. This will be sent to participants prior to the course via email.

Volunteers must be 14 years of age or older by the start of the course.

Looking for additional volunteer hours, more information on becoming a Town of Newmarket camp staff, and ALL certifications needed to work camps? Check out our Counsellor in Training course on page 34 for this amazing opportunity!





Adapted Camps

Adapted Camps are specifically designed programs for campers with disabilities. These camps will feature small staff to participant ratios (1:3), smaller group sizes, a sensory aware environment, and specifically designed programming to meet the needs of all campers.

SENSE-SATIONAL

In this new adapted camp for children with disabilities, campers will have the opportunity to explore all their five senses in an engaging and supported way. Participants will spend time connecting with nature, expelling energy and engaging in traditional camp activities and games. This camp will also feature water play/swimming, outdoor picnics, crafting, dancing, adventures to the park and a featured special guest. A 1:3 staff to participant ratio will be provided. Campers unable to participate in a 1:3 ratio and requiring 1:1 support must register into Inclusion 1:1 Support.

Ages: 6 to 12 Years

Location: Community Centre and Lions Hall

Extended Care: CCLH

5 Day – Res: \$280, Non-Res: \$280

CAMP OHANA

Come join us in this new adapted camp specifically designed for youth with disabilities and unique needs. At Camp Ohana, each camper's strengths and abilities will be highlighted through adapted play activities with a focus on fostering independence, encouraging friendships, and building social skills. Campers will enjoy both passive and active games, daily outdoor walks, water play and swimming, and a featured special guest. A 1:3 staff to participant ratio will be provided. Campers unable to participate in a 1:3 ratio and requiring 1:1 support must register into Inclusion 1:1 Support.

Ages: 13 to 19 Years

Location: Community Centre and Lions Hall

Extended Care: CCLH

5 Day – Res: \$280, Non-Res: \$280

4 Day – Res: \$225, Non-Res: \$225

The Town of Newmarket offers 1:1 Inclusion Facilitators to assist campers with disabilities. More information on how to request a 1:1 support staff can be found on pages 12 & 13 of this guide.



**Click here to
register online**

Camps Index

Summer Camp Chart

Camp	Age	Jul 2 - 5	Jul 8 - 12	Jul 15 - 19	Jul 22 - 26	Jul 29 - Aug 2	Aug 6 - 9	Aug 12 - 16	Aug 19 - 23	Aug 26 - Sep 30	Location
Are You Trippin	6 - 9		•		•		•		•		TUC
Art Attack Camp	6 - 10	•	•	•	•	•	•	•	•		RTRC
Art Studio Camp	9 - 13	•	•	•	•	•	•	•			OTH
Camp Extreme	9 - 12	•	•	•	•	•	•	•			MC
Camp Newlaka	5 - 7	•	•	•	•	•	•	•	•		CCLH
Camp Ohana	13 - 19	•		•		•					CCLH
Cooking Camp - Jr. & Sr.	6 - 9 & 9 - 12	SR	JR	SR	JR	SR	JR	SR	JR		RYC
Counsellor in Training	13 - 16		•		•		•				MLPS
Creative Campers	4 - 6		•	•	•	•	•	•			MLPS
Engineering for Kids: How Amusing Week	7 - 12							•			DPS
Engineering for Kids: Hydrocraft Racing Video Game & Marine Engineering Camp	7 - 12			•							DPS
Engineering for Kids: Junior Inventors Camp	4 - 6			•							DPS
Engineering for Kids: Junior Mission to Mars	4 - 6							•			DPS
Engineering for Kids: Junior Travel Camp	4 - 6				•						DPS
Engineering for Kids: Let's Make Toys Camp	4 - 6					•					DPS
Engineering for Kids: Minecraft® Mission to Mars & Mars Rover Camp	7 - 12				•						DPS

TUC - Trinity United Church CCLH - Community Centre & Lions Hall MC - Magna Centre
 RYC - Recreation Youth Centre & telMAX Indoor Skate Park MLPS - Maple Leaf public School
 DPS - Denne Public School

Summer Camp Chart

Camp	Age	Jul 2 - 5	Jul 8 - 12	Jul 15 - 19	Jul 22 - 26	Jul 29 - Aug 2	Aug 6 - 9	Aug 12 - 16	Aug 19 - 23	Aug 26 - Sep 30	Location
Engineering for Kids: Minecraft© Urban Innovations	7 - 12					•					DPS
Engineering for Kids: Playful Playground Camp	4 - 6		•								DPS
Engineering for Kids: RoboGame Carnival & Master Machines	7 - 12		•								DPS
Envi-Sci Camp	7 - 10	•	•	•	•	•	•	•	•		CCLH
Film Camp in a Box: Blockbuster Movie Making Camp	9 - 13		•		•			•			SSPS
Film Camp in a Box: Lego & Clay Stop Motion Animation	7 - 9			•			•				SSPS
Film Camp in a Box: Music Video Production Workshop	9 - 13					•					SSPS
Glee Camp - Jr. & Sr.	6 - 9 & 9 - 12	JR	SR			SR	JR				NRPAC
Hockey Camp - Jr. & Sr.	6 - 9 & 9 - 12	•	•	•	•	•	•	•	•		MC
Junior Firefighter	8 - 11			•							RTRC
Junior Lifeguard	10 - 12					•					MC
Junior Veterinarians	10 - 12						•				CCLH
Karate Camp - Jr. & Sr.	5 - 8 & 9 - 12		•		•						AVPS
Kids Great Minds: Adventures in Interactive Programming	8 - 11						•				SSPS

DPS - Denne Public School CCLH - Community Centre & Lions Hall

SSPS - Stuart Scott Public School NRPAC - New Roads Performing Arts Centre

MC - Magna Centre RTRC - Ray Twinney Recreation Complex

AVPS - Armitage Village Public School

Summer Camp Chart

Camp	Age	Jul 2 - 5	Jul 8 - 12	Jul 15 - 19	Jul 22 - 26	Jul 29 - Aug 2	Aug 6 - 9	Aug 12 - 16	Aug 19 - 23	Aug 26 - Sep 30	Location
Kids Great Minds: Cartoon Computer Animations Camp	6 - 11							•			SSPS
Kids Great Minds: Creating Virtual Reality Avatars	7 - 11				•						SSPS
Kids Great Minds: PC and Video Game Creation Camp	7 - 10		•								SSPS
Kids Great Minds: Redstone Inventions in Minecraft® Camp	7 - 12			•							SSPS
Kids Great Minds: 3D Printing & Modelling Camp	7 - 12					•					SSPS
Kids on the Move	4 - 12		•	•	•	•	•	•			MLPS
Kids Place Camp Jr.	6 - 9	•	•	•	•	•	•	•	•		RTRC
Kids Place Camp Mini	4 - 5	•	•	•	•	•	•	•	•		RTRC
Last Blast: Kids Place Camp Jr.	6 - 9									•	RTRC
Last Blast: Kids Place Camp Mini	4 - 5									•	RTRC
Last Blast: Kids Place Camp Sr.	9 - 12									•	RTRC
Last Blast: Art Attack	6 - 10									•	RTRC
Leader in Training	10 - 12	•				•					RTRC
Mad Science: Science Adventures - Jr. & Sr.	4 - 6 & 6 - 12		•								AVPS
Mad Science: Eureka! - Jr. & Sr.	4 - 6 & 6 - 12			•				•			AVPS
Mad Science: Machine Maniacs - Jr. & Sr.	4 - 6 & 6 - 12				•		•				AVPS

SSPS - Stuart Scott Public School MLPS - Maple Leaf public School

RTRC - Ray Twinney Recreation Complex AVPS - Armitage Village Public School

Summer Camp Chart

Camp	Age	Jul 2 - 5	Jul 8 - 12	Jul 15 - 19	Jul 22 - 26	Jul 29 - Aug 2	Aug 6 - 9	Aug 12 - 16	Aug 19 - 23	Aug 26 - Sep 30	Location
Mad Science: Junior Science Academy	4 - 6					•					AVPS
Mad Science: Rocket Camp	6 - 12					•					AVPS
Medics Camp: Discover	9 - 12								•		CCLH
Mini Adventures: Every Child is a Superhero	4 - 6			•							DPS
Mini Adventures: Little Builders	4 - 6						•				DPS
Mini Adventures: Magic In Me	4 - 6		•								DPS
Mini Adventures: Out of This World	4 - 6							•			DPS
Mini Adventures: Safari Camp	4 - 6					•					DPS
Mini Adventures: Spy Camp	4 - 6				•						DPS
Minor Leaguers	4 - 5	•	•	•	•	•	•	•	•	•	MC
Move It! - Mini, Jr. & Sr.	4 - 5; 6 - 9; 9 - 12	M	JR	SR	M	JR	SR	M			OTH
Outdoor Sports Sr.	9 - 12		•		•			•	•		RTRC
Outta Townerz	9 - 12	•		•		•		•			TUC
Pursuit to Paris - Mini & Jr	4 - 6 & 6 - 9	JR	M	JR	M	JR	M	JR	M		RTRC
Robothink: Battle Robots	6 - 12						•				DPS
SENSE-Sational	6 - 12		•		•			•			CCLH
Skate & Scooter - Jr. & Sr.	6 - 9 & 9 - 12	JR	SR	JR	JR	SR	JR	JR	SR	JR	RYC

AVPS - Armitage Village Public School CCLH - Community Centre & Lions Hall

DPS - Denne Public School MC - Magna Centre OTH - Old Town Hall

RTRC - Ray Twinney Recreation Complex TUC - Trinity United Church

RYC - Recreation Youth Centre & telMAX Indoor Skatepark

Summer Camp Chart

Camp	Age	Jul 2 - 5	Jul 8 - 12	Jul 15 - 19	Jul 22 - 26	Jul 29 - Aug 2	Aug 6 - 9	Aug 12 - 16	Aug 19 - 23	Aug 26 - Sep 30	Location
Soccer Camp - Junior & Intermediate	6 - 8 & 9 - 12		JR	INT	JR	INT					NSC
Sports Camp Jr.	6 - 9	•	•	•	•	•	•	•	•	•	MC
Summer Sizzlers	4 - 8		•	•	•	•	•	•			MLPS
Swim Camp - Jr. & Sr. (RTRC)	6 - 9 & 9 - 12	JR		SR		JR		SR			RTRC
Swim Camp - Jr. & Sr. (MC)	6 - 9 & 9 - 12	SR		JR				JR			MC
Swimcycle - Jr. & Sr. (RYC)	6 - 9 & 9 - 12	JR							SR		RYC
Swimcycle - Jr. & Sr. (SSPS)	6 - 9 & 9 - 12		SR	JR	SR	JR	SR	JR			SSPS
Tennis Camp - Jr. & Sr.	6 - 9 & 9 - 12		JR	SR	JR	SR	JR	SR			SSPS
Theatre Camp - Jr. & Sr.	6 - 9 & 9 - 12			JR				SR			NRPAC
Toronto Rush: Introduction to Ultimate Frisbee	8 - 13						•				AVPS
X-Movement: X-GLOBAL SPORTS - Jr. & Sr.	6 - 9 & 10 - 13			JR				SR			AVPS
X-Movement: IMAGINE X! Jr.	6 - 9					•					AVPS
YNBA: Basketball Camp	8 - 12		•	•	•	•	•	•			DPS

NSC - Newmarket Soccer Club MC - Magna Centre MLPS - Maple Leaf Public School
 RTRC - Ray Twinney Recreation Complex RYC - Recreation Youth Centre & telMAX Indoor Skatepark
 SSPS - Stuart Scott Public School NRPAC - New Roads Performing Arts Centre
 RTRC - Ray Twinney Recreation Complex AVPS - Armitage Village Public School
 DPS - Denne Public School

