



Mayor Van Bynen's Address
Newmarket Chamber of Commerce
February 20, 2009

Newmarket Town Council

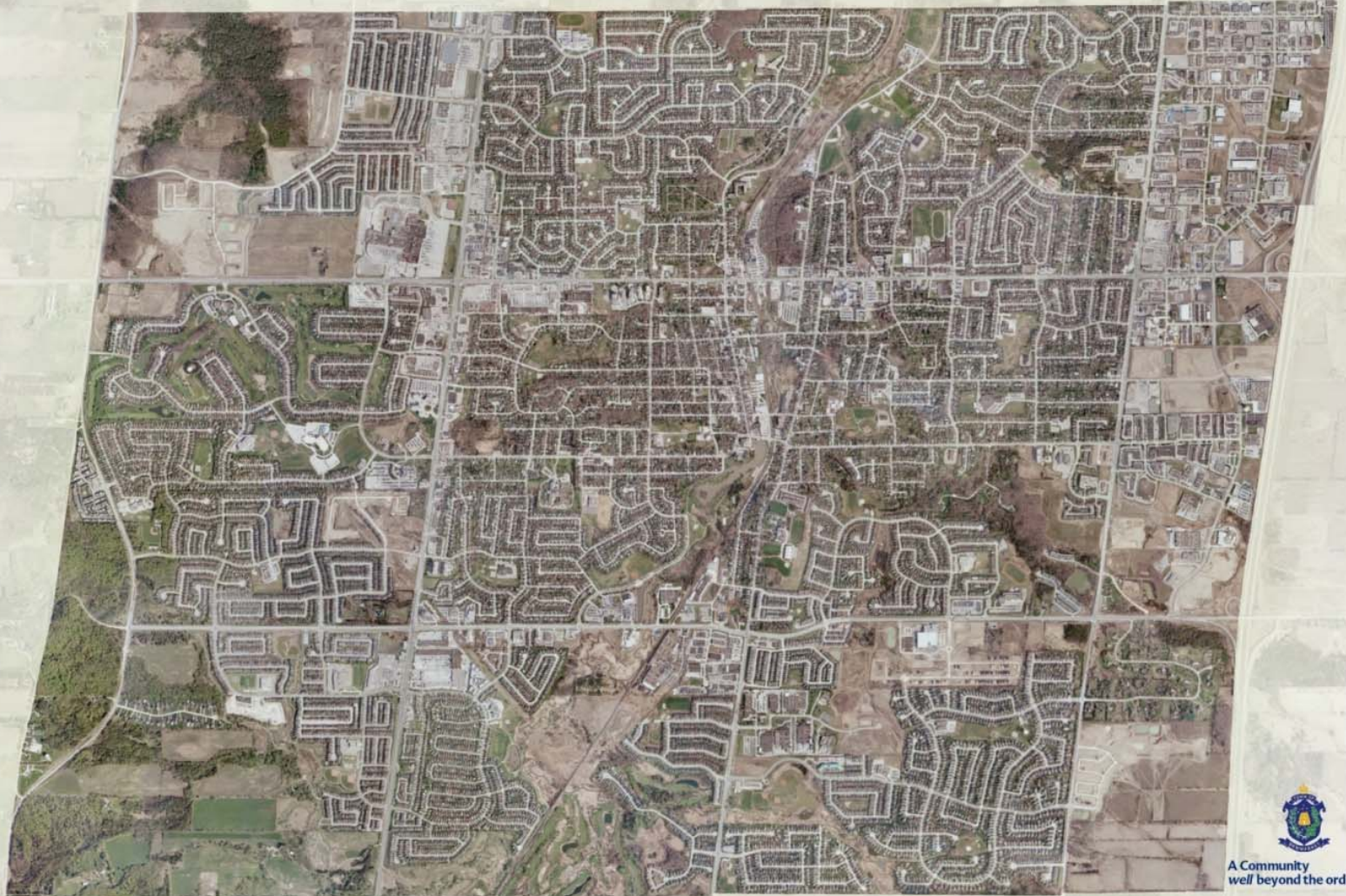


**Mayor Tony Van Bynen, Regional Councillor John Taylor,
Councillor Chris Emanuel, Councillor Victor Woodhouse,
Councillor Dave Kerwin, Councillor Larry Blight,
Councillor Tom Vegh, Councillor Dennis Ramsarran,
Councillor Joe Sponga**

Town of Newmarket Team



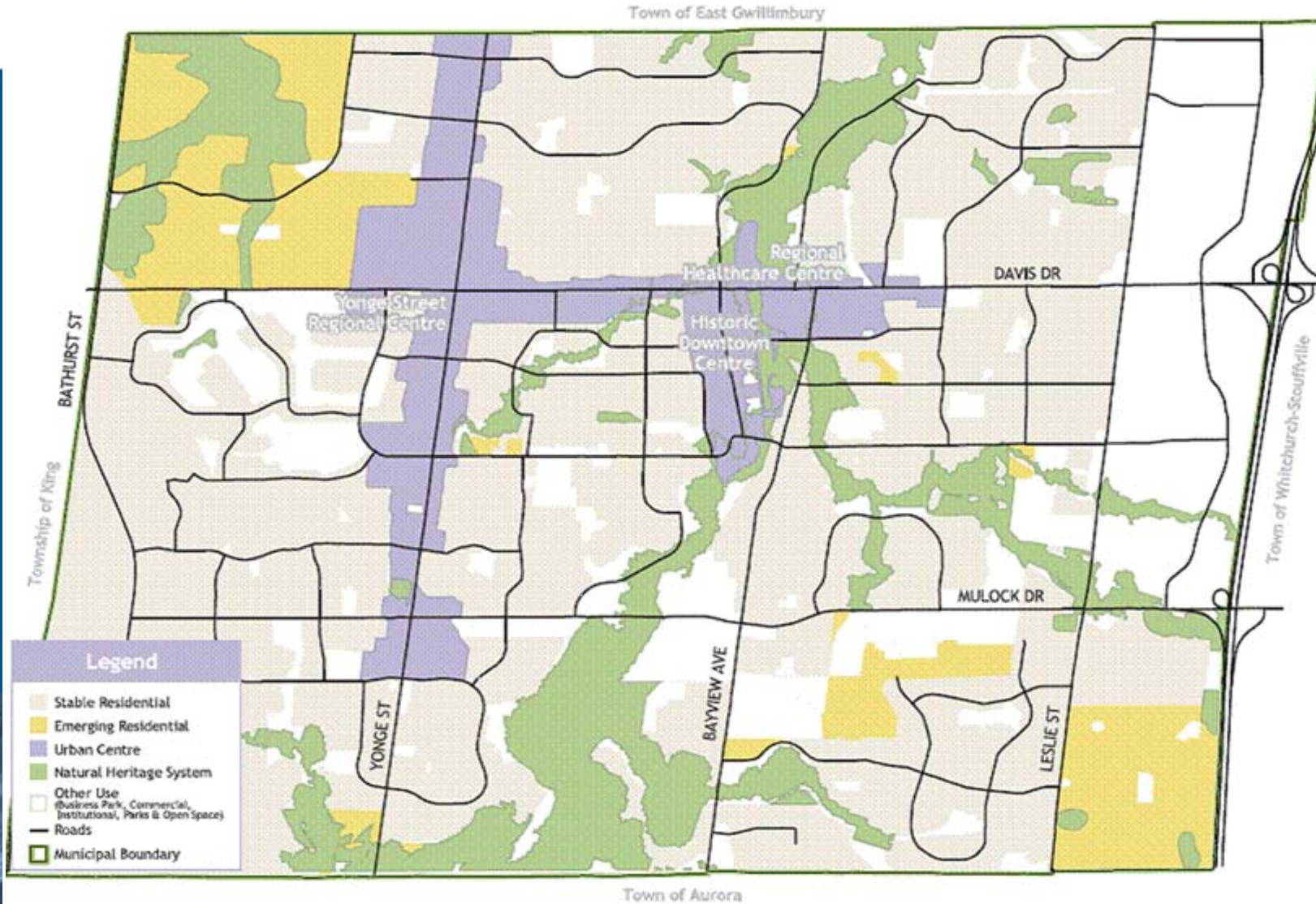
The Town of Newmarket



0 0.5 1 2 Kms



A Community well beyond the ordinary



A conceptual drawing of the new rapid transit stations that are coming to Newmarket



An artistic approximation of how Newmarket's Yonge Street and Davis Drive may evolve as a result of the new Official Plan supported by a new rapid transit system.



5 year trend shows that the tax rate increase can stabilize at about 3%.

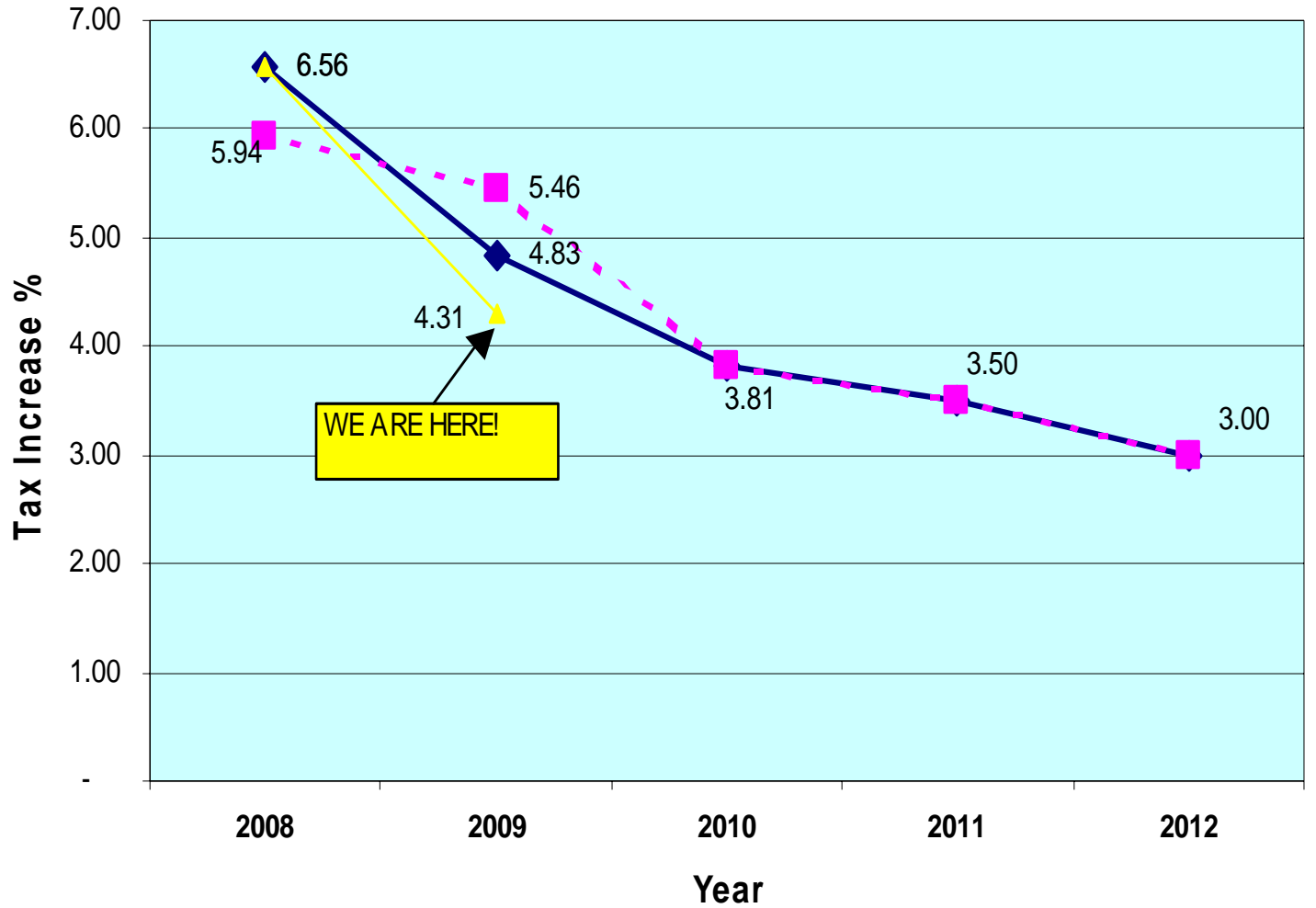
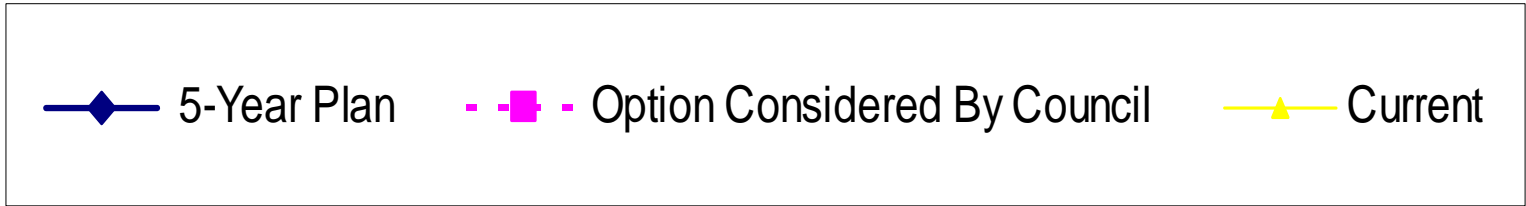
5-Year Consolidated Tax-Supported Operating Budget Forecast

	Tax Increase in %						Tax Increase in \$000's				
	2008	2009	2010	2011	2012		2008	2009	2010	2011	2012
Current operating:											
Base	2.74	2.57	2.63	2.64	2.73		876	877	940	979	1,050
Efficiency	(0.88)	-	-	-	-		(281)	-	-	-	-
Annualization	0.12	0.28	-	-	-		38	95	-	-	-
Subtotal	1.98	2.85	2.63	2.64	2.73		633	972	940	979	1,050
Growth	0.77	-	-	-	-		246	-	-	-	-
Assessment growth	(2.40)	(2.20)	(2.00)	(2.00)	(2.00)		(768)	(750)	(714)	(743)	(768)
Subtotal	(1.63)	(2.20)	(2.00)	(2.00)	(2.00)		(522)	(750)	(714)	(743)	(768)
Net core costs	0.35	0.65	0.63	0.64	0.73		111	222	226	236	282
Reserve financing	3.15	-	-	-	-		1,008	-	-	-	-
Extra Hydro dividend	1.56	-	-	-	-		500	-	-	-	-
Tax financed capital	(0.30)	0.50	1.00	0.50	0.50		(96)	169	357	186	192
Enhancements	0.31	2.20	0.67	0.82	0.18		100	750	239	304	69
ARF	1.49	1.48	1.51	1.54	1.59		476	506	539	573	610
Total	6.56	4.83	3.81	3.50	3.00		2,099	1,647	1,361	1,299	1,153



Summary of Updated Preliminary Draft 2009 Operating Budget

A) MAJOR DRIVERS:	\$	Tax Impact
• Revenue Loss	\$758K	2.22%
• Expenses – Solid Waste & Utilities/Fuel	549	1.62%
• Growth	<u>202</u>	<u>0.59%</u>
Subtotal A	\$1,509	4.43%
B) BALANCE OF BASE:		
Wages & Benefits	573	1.68%
• Mandatory	5	0.01%
• Assessment Growth	<u>(794)</u>	<u>2.33%</u>
Subtotal B	(216)	-0.64%
C) ENHANCEMENTS:		
	177	<u>0.52%</u>
TOTAL (Rounded)	\$1,470	4.31%



RESIDENTIAL PROPERTY TAX

UPDATED PROJECTION FOR 2009

	2008	2009	\$ Change	% Change
Town	\$ 1,079.29	\$ 1,125.81	\$ 46.52	4.31%
Region	1,421.98	1,453.26	31.28	2.20%
School Board	728.28	728.28	-	0.00%
Total	\$ 3,299.55	\$ 3,307.35	\$ 77.80	2.41%

**Based on estimated average assessment of \$300,000.00.
Region % based on draft 2009 projection.**

2009 BUDGET DIRECTION

- **Maintain what we have;**
- **Endeavour to maintain the same level of service;**
- **Prioritize capital projects that contribute to long term efficiency an effectiveness;**
- **Endeavour to invest in areas that contribute to the long term sustainability of the municipality.**

NEDAC Members

- **Chair, Ian Proudfoot, VP and Regional Publisher, York Region Newspaper Group**
- **Vice-Chair, Jim Gragtmans, President, ET Ideas, & Chair, Newmarket Chamber of Commerce**
- **Mayor Tony Van Bynen**
- **Regional Councillor John Taylor**
- **Jim Alexander, Owner, seven Newmarket Tim Hortons**
- **Dan Carriere, President and CEO, Southlake Regional Health Centre**
- **Bob Forhan, President, iPlan Corp.**

NEDAC Members cont'd

- **Jim Lotimer, President & CEO of Lotek Wireless Inc.**
- **Jackie Playter, Co-Owner, Roadhouse and Rose Funeral Home**
- **Kyle Peterson, Director of Corporate Projects, Executive Vice-Chairman's Office, Magna International Inc.**
- **David Rae, President and CEO, Allied Global Holdings**
- **Michael Siu, Associate VP of Research Science and Technology, and Professor of Chemistry, York University**
- **David White, President, MediaTile Company Canada**

Targeted Sectors

- Community growth sectors assessed on the basis of the goals and guiding principles.
Driving Newmarket's future economy will be:

⇒Health

⇒Knowledge, including post secondary education

⇒Newmarket as Regional Centre

⇒Advanced Manufacturing (Services)

⇒Arts and Culture

Southlake Regional Health Centre Campus



THANK YOU!

QUESTIONS?